

## EP Series Ultraviolet Sanitizer



### SPECIFICATIONS

The Ultraviolet Sanitizer Unit shall be a Delta Ultraviolet Corporation EP Series Model EP-\_\_\_\_\_, rated at \_\_\_\_\_ Volts, 50/60 Hz. The unit shall be equipped with a 96 inch (243.8 cm) long power cord. The wet chamber shall be a 6 inch (152.4 cm) Type 316 stainless steel housing with four mounting feet and PVC electrical enclosure bonnet suitable for outdoor installation. PVC Inlet/Outlet unions shall be \_\_\_\_\_ (inch/cm) socket size. The UV unit shall include a pressure switch to prevent operation when water is not flowing, a pressure gauge and a clear viewing tail piece to verify bulb ON condition. The UV lamp shall be design rated at 9,000 hours of continuous use and shall be fully replaceable without requiring special tools. The UV lamp End-Of-Life (EOL) rating shall be no less than 30,000  $\mu\text{watts}/\text{sec}/\text{cm}^2$  (Class A drinking water requirement) and shall bear the manufacturer's EPA Registration number on the unit, cartons and printed literature. The UV unit shall be warranted for five [5] years (Lamp – one [1] year) and shall be accompanied by a printed factory limited warranty, installation instructions and owner's manual.



Model	Part Number	Voltage	I/O Size
EP-5	35-08150	120V/50/60Hz	2 inch
EP-5	35-08160	120V/50/60Hz	63mm
EP-5	35-08170	240V/50/60Hz	2 inch
EP-5	35-08171	240V/50/60Hz	63mm
EP-10	35-08152	120V/50/60Hz	2 inch
EP-10	35-08162	120V/50/60Hz	63mm
EP-10	35-08172	240V/50/60Hz	2 inch
EP-10	35-08173	240V/50/60Hz	63mm

Model	Part Number	Voltage	I/O Size
EP-20	35-08154	120V/50/60Hz	2 inch
EP-20	35-08164	120V/50/60Hz	63mm
EP-20	35-08174	240V/50/60Hz	2 inch
EP-20	35-08175	240V/50/60Hz	63mm
EP-40	35-08156	120V/50/60Hz	2 inch
EP-40	35-08166	120V/50/60Hz	63mm
EP-40	35-08176	240V/50/60Hz	2 inch
EP-40	35-08177	240V/50/60Hz	63mm

Model	Cord Length	Bulb Output (EOL)	Bulb Watts
EP-5	60" (152.4 cm)	30,000 $\mu\text{W}/\text{sec}/\text{cm}^2$	30
EP-10	60" (152.4 cm)	30,000 $\mu\text{W}/\text{sec}/\text{cm}^2$	58

Model	Cord Length	Bulb Output (EOL)	Bulb Watts
EP-20	60" (152.4 cm)	30,000 $\mu\text{W}/\text{sec}/\text{cm}^2$	80
EP-40	60" (152.4 cm)	30,000 $\mu\text{W}/\text{sec}/\text{cm}^2$	90

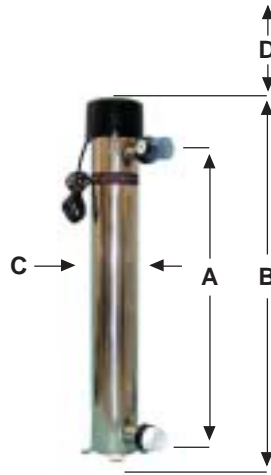
### POOL FLOW CHART

Delta UV EA Model	Maximum Flow Rate (GPM)	Maximum Flow Rate (LPM)	Minimum UV Microwatts $\text{sec}/\text{cm}^2$	Max Volume 12 Hr. Turnover (Gallons)	Max Volume 12 Hr. Turnover (Liters)	Max Volume 8 Hr. Turnover (Gallons)	Max Volume 8 Hr. Turnover (Liters)
EP-5	26	117	30290	22320	84490	14880	56327
EP-10	53	238	30840	45360	171706	30240	114470
EP-20	71	333	30290	63360	239843	42240	159895
EP-40	80	379	30980	72000	272549	48000	181699

### POND FLOW CHART

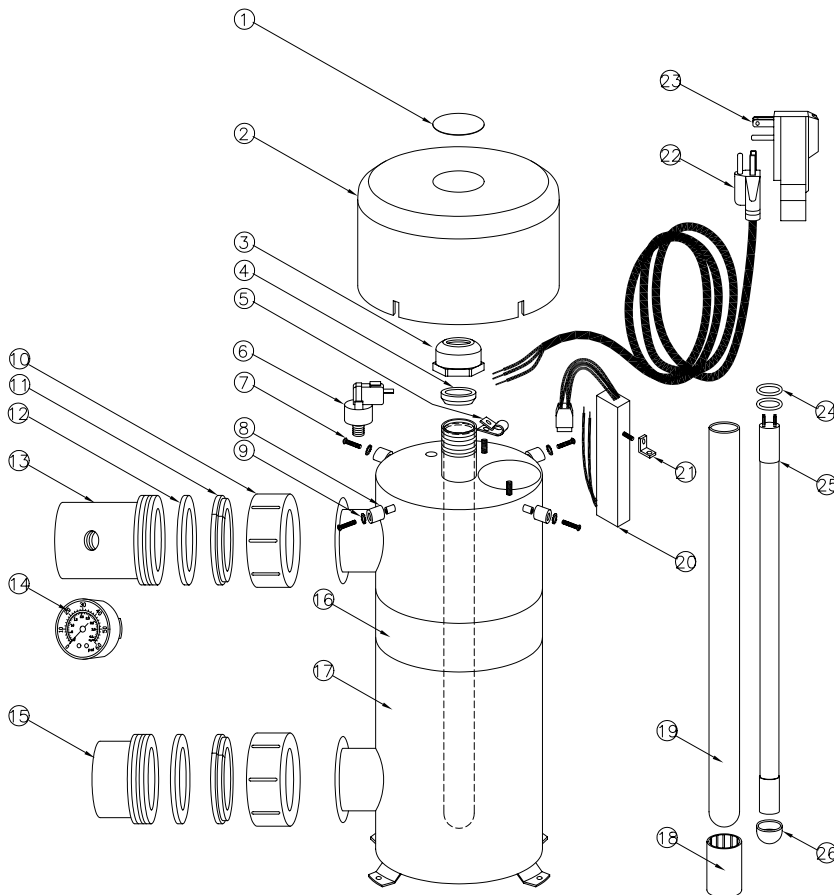
Delta UV EA Model	Maximum Flow Rate (GPM)	Maximum Flow Rate (LPM)	Minimum UV Microwatts $\text{sec}/\text{cm}^2$	Max Volume 2 Hr. Turnover (Gallons)	Max Volume 2 Hr. Turnover (Liters)	Max Volume 3 Hr. Turnover (Gallons)	Max Volume 3 Hr. Turnover (Liters)	Max Volume 4 Hr. Turnover (Gallons)	Max Volume 4 Hr. Turnover (Liters)
EP-5	26	117	30290	3720	14082	5580	21123	7440	28163
EP-10	53	238	30840	7560	28618	11340	42927	15120	57235
EP-20	71	333	30290	10560	39974	15840	59961	21120	79948
EP-40	80	379	30980	12000	45425	18000	68137	24000	90850

### Physical Dimensions



Model	Dim. A	Dim. B	Dim. C	Dim. D	Empty Wt.	Operating Wt.	Shipping Wt.	Carton Size
EP-5	7.75 in. 196.8 mm	17.5 in. 444.5 mm	6 in. 152.4 mm	7 in. 177.8 mm	14 lbs 6 kg	27 lbs 12 kg	19 lbs 8 kg	22-1/4"x11"x11" 565.1 x 279.4 x 279.4
EP-10	14.75 in. 374.6 mm	24.5 in. 622.2 mm	6 in. 152.4 mm	18 in. 457.2 mm	17 lbs 7 kg	37 lbs 17 kg	23 lbs 10 kg	28-1/8"x11"x11" 714.3 x 279.4 x 279.4
EP-20	28.875 in. 733.4 mm	38.625 in. 981 mm	6 in. 152.4 mm	32 in. 812.8 mm	23 lbs 10 kg	57 lbs 25 kg	31 lbs 14 kg	42-1/8"x11"x11" 1069.9 x 279.4 x 279.4
EP-40	36 in. 914.4 mm	45.75 in. 1602 mm	6 in. 152.4 mm	39 in. 990.6 mm	25 lbs 11 kg	67 lbs 30 kg	24 lbs 15 kg	49-1/2"x11"x11" 1257.3 x 279.4 x 279.4

All weights and dimensions nominal.



PART NUMBER MATRIX				
MODEL	ITEM #17	ITEM #19	ITEM #20	ITEM #25
EP-5	35-04150	58-50305	70-10121	70-18405
EP-10	35-04152	58-50310	70-10121	70-18410
EP-20	35-04154	58-50320	70-10122	70-18420
EP-40	35-04156	58-50340	70-10122	70-18440

29	BULB CUSHION	1	44-02019
28	HO UV BULB	1	SEE MATRIX
24	BULB O'RING	2	44-02221
23	CORD CONNECTED GFCI (OPTIONAL)	1	70-09012
22	CORD 18/3X96"-NEMA	1	64-02002
21	BRACKET-0.75"x0.75"-L SHAPE	1	82-02044
20	BALLAST ASSEMBLY	1	SEE MATRIX
19	QUARTZ TUBE	1	SEE MATRIX
18	QUARTZ TUBE INSERT-FOR UV	1	86-02413
17	UV-HOUSING-6"-2.25" IN/OUT	1	SEE MATRIX
16	TANK ID LABEL-SELF ADHESIVE	1	48-02204
15	UNION TAIL PIECE-2" WHITE	1	86-02352
14	PRESSURE GAUGE	1	84-82234
13	UNION TAIL PIECE-2" CLEAR	1	86-02402
12	FLAT ORING-2" WHITE	2	44-02335
11	NUT RETAINER-2" BLUE	2	86-02336
10	UNI-NUT-2 BLACK	2	86-02335
9	STAR WASHER-#8-S/S	3	40-08018
8	STANDOFF-1/2"x1/2"x5/16"-NYLON	4	40-50252
7	SCREW #6-32X5/8"-PHMSSS	4	40-06015
6	PRESSURE SWITCH	1	70-02305
5	CABLE CLAMP 5/16"	1	40-08016
4	QUARTZ TUBE COMPRESSION GASKET	1	44-02018
3	QUARTZ TUBE ACORN NUT	1	86-02411
2	ELECTRICAL ENCLOSURE BONNET	1	86-02702
1	DECO DISC	1	90-10201
ITEM	DESCRIPTION	QTY	PART#